

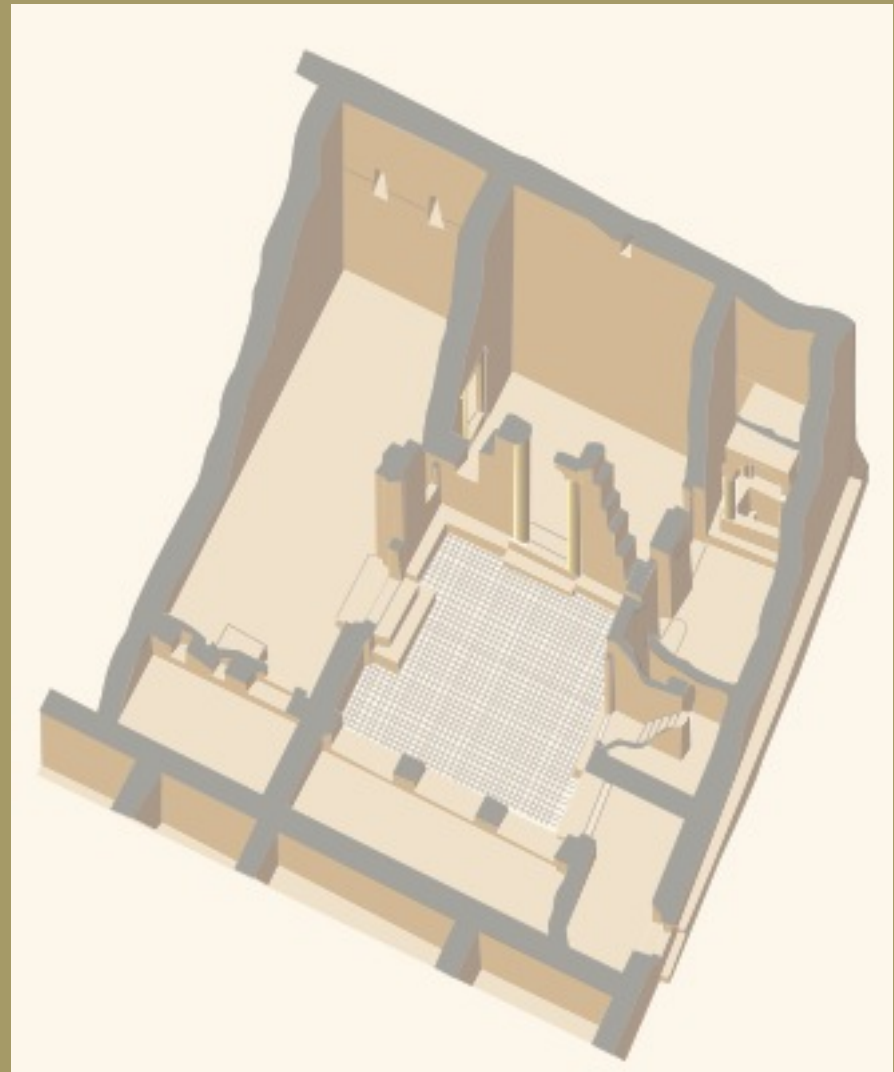
LE PREMIER ART CHRÉTIEN
(III^e-VI^e siècle)
ET LA NAISSANCE
D'UNE SYMBOLIQUE CHRÉTIENNE

Session sur l'enseignement du fait religieux

« Initiation à la Symbolique »

Marseille, ICM – ISTR, 27 mars 2014

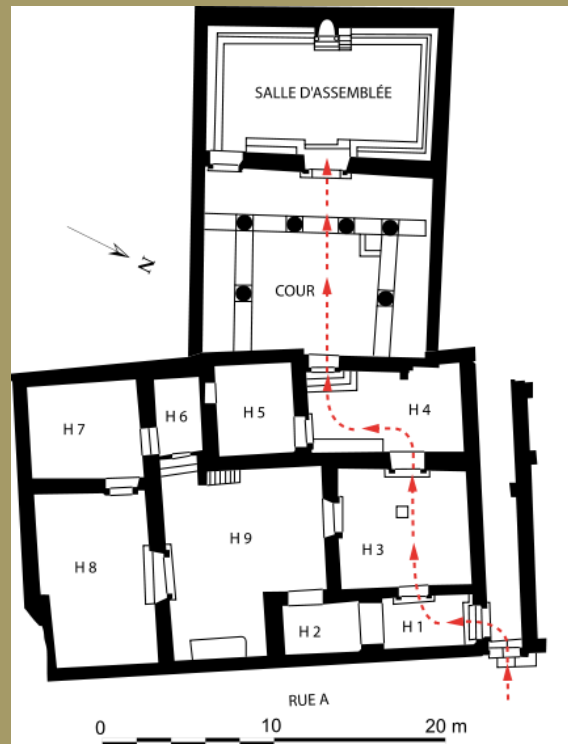


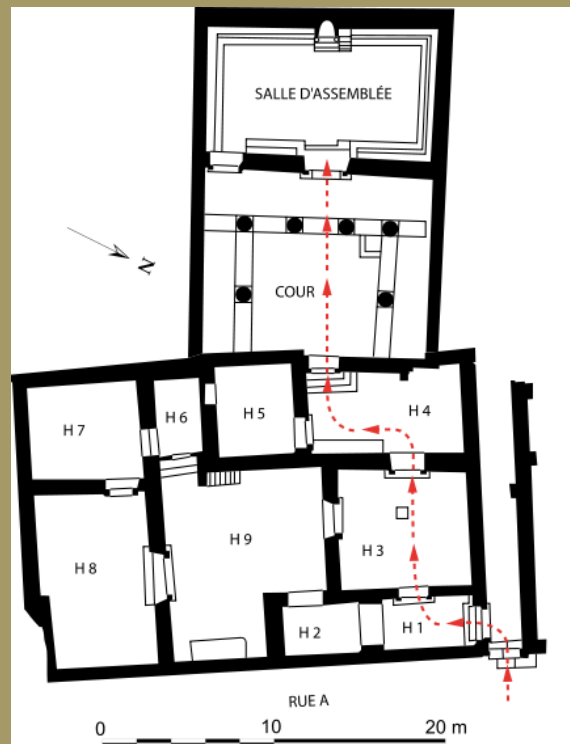


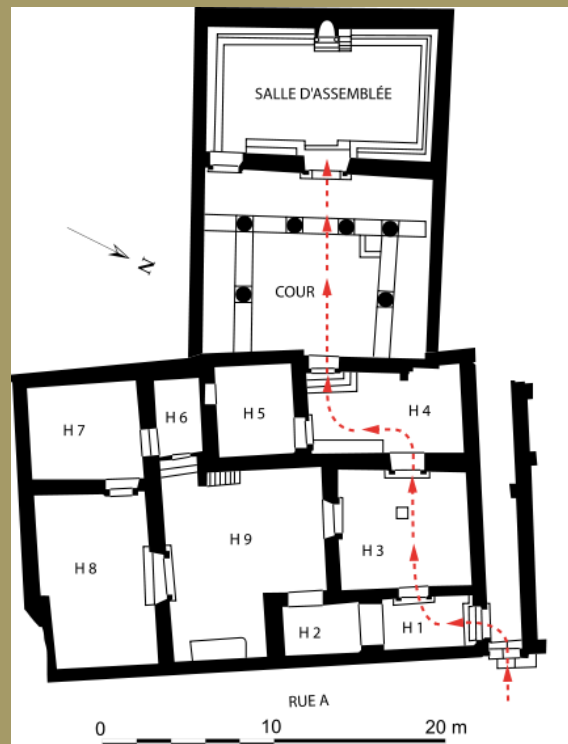












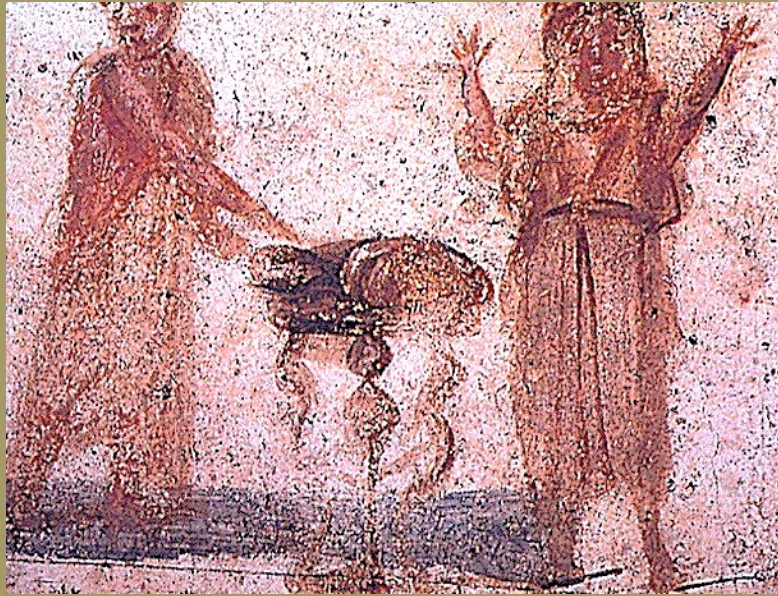










































Mosaïque de Pétroline.



Mosaïque de Portofino.























































